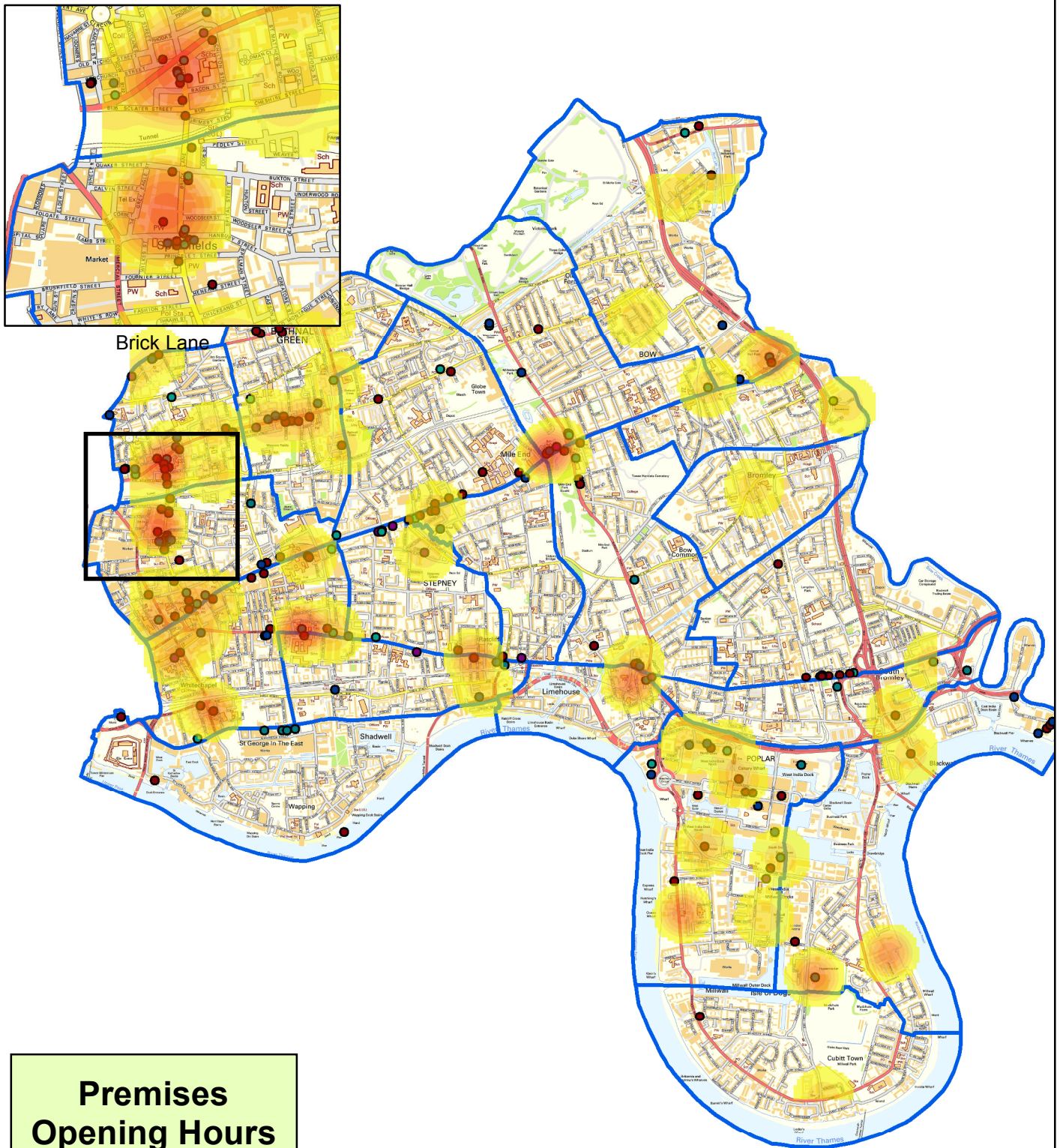


## Sep 14 to Aug 15 ASB/crime hotspot map for licensed premises between 1am and 2am



### Premises Opening Hours

- Open 24hrs
- Closing 1am-2am
- Closing 2am-3am
- Closing 3am-4am
- Closing 4am-5am
- Closing 5am-6am

Between September 2014 and August 2015 there has been 132 incidents reported to the Council or the Police relating to a licensed premises between the hours of 1am and 2am. There has been a 41% increase in reported incidents compared to the same period in 2013 - 2014.

Brick Lane has the largest concentration of incidents with a total of 20 incidents which equates to 15%.

12 incidents have occurred between the hours of 1am and 2am at fast food outlets or pubs close to Mile End Station, of which 9 incidents occurred on a Friday/Saturday night.